

Accessibility Guide for Pembrey Country Park Caravan & Motorhome Club Site

Contact for Accessibility Enquiries: Please ask for the Duty Manager

✉ pembreycountrypark@camc.com

☎ 01554 834369

🌐 <https://www.caravanclub.co.uk/club-sites/wales/carmarthenshire/pembrey-country-park-caravan-club-site/>

At a Glance

Level Access

- The site is relatively level throughout with some gentle slopes

Step only Access

- The male and female facilities have step only access
- The play area has a small step to access

Accessible Toilets and Showers

- There is a combined accessible toilet and shower cubicle in the toilet block

Accessible Pitches

- No designated accessible pitches, however pitches are allocated according to your needs or preference, so please contact us in advance to discuss your requirements.



We support the Hidden Disabilities Scheme

- Our organisation supports the Hidden Disabilities Scheme, lanyards and pins are available in reception

Site Address

Pembrey Country Park Caravan Club Site

Pembrey,

Llanelli,

Carmarthenshire,

SA16 0EJ,

Wales

Arrival and Reception

Approach Route

- The site is clearly signposted
- Access onto the site is via a tarmac driveway
- The reception building is on the left hand side of the entrance road
- The gate from the road is left open at all times but access into the site is controlled via a vehicle barrier controlled by card access, with the card reader at 900mm high.
- The ground is level in this area with hard surfaced paths linking facilities.

Parking

- A new arrival bay is set directly outside of the Reception building.
- There are 6 standard visitor parking bays, with good access to reception. However there are no designated accessible bays.
- There is no late night arrival bay

Entrance into Reception

- There are dropped kerbs to the brick paving pathway at the front of the reception building.
- The entrance door is 800mm wide over a 10mm weather strip at the threshold
- The entrance door is not power assisted, and opens inwards
- A call bell is available to summon assistance, this is 1400mm above ground level

Reception

- There is 2300mm x 1800mm turning space, clear of the desk and furniture
- The reception desk is set 950mm above the floor without a dropped section

- The desk is not fitted with a hearing loop



Getting around the Site

- The site is relatively level throughout, with some gentle slopes
- Pedestrians share vehicles routes which are well maintained tarmac, but do incorporate speed bumps

Pitches

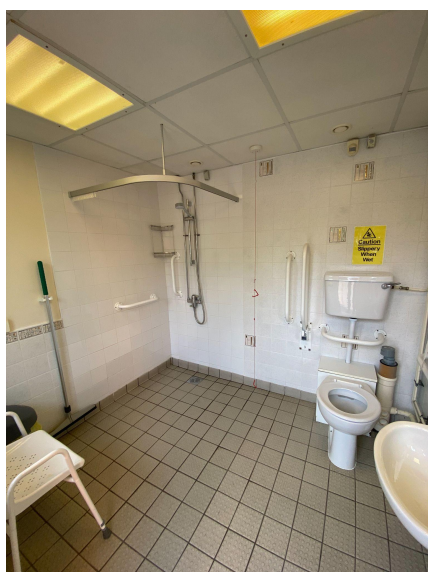
- There are 125 pitches on site, 69 of which are hardstanding
- Temporary multipurpose access rubber matting is not provided
- There are no designated accessible pitches, however pitches are allocated according to your needs or preference, so please contact us in advance to discuss your requirements.

Toilets and Changing Facilities

Accessible Toilets and Bathing Facilities – Toilet Block

- A combined Accessible Toilet and Shower cubicle is located in the Toilet Block which is set in the middle of the site
- The Accessible Toilet and Shower is accessed via a 2 metre long ramp with a hand rail to one side
- The door is 900mm wide, over a 20mm weather strip at the threshold
- The cubicle door is secured by RADAR key. A key can be borrowed from Reception
- The cubicle's overall dimensions are 2200mm x 2500mm
- The WC pan is left hand transfer

- There is no drop down shower seat, however a moveable shower chair is provided
- The toilet seat is 480mm above the floor level
- The clear space to the side of the toilet is 1800mm wide
- The cubicle is fitted with a pull cord alarm, which is tested frequently
- The shower seat and WC Pan are fitted with grab rails to assist transfer
- Shower controls are 950mm high
- The shower head is fitted on a sliding rail, which is a minimum of 1400mm above floor level
- The basin taps and shower controls are fitted with levers



Standard Toilets and Washrooms

- There is one toilet block to the centre of the site, there are large male and female facilities within the toilet block and also smaller male and female areas in the block
- Parking is available next to Toilet Block
- The toilet block has a paved concrete path around, with dropped kerbs to access
- The larger female facilities, has a 750mm wide door, with a 100mm step in
- The larger male facilities has a 750mm wide door with a 60mm step in and a 40mm threshold
- The smaller male and female facilities, have 750mm wide doors, with a 150mm step in

- The larger female area has 6 WC cubicles, 4 Shower cubicles and 8 Washbasin Privacy cubicles
- The larger male area has 5 WC cubicles, 4 Urinals, 4 Shower cubicles and 7 Washbasin Privacy cubicles
- The smaller female area has 2 WC cubicle and 2 Shower cubicles
- The smaller male area has 2 WC cubicle and 2 Shower cubicles
- The larger female and male areas have a modified WC cubicle, a modified Shower cubicle and a modified Washbasin Privacy cubicle with grab rails to assist mobility
- In the male and female area there is a modified WC cubicle, shower cubicle and privacy washbasin cubicle, with grab rails to assist with mobility
- Taps in each area incorporate lever controls



Baby and Toddler Room - Toilet Block

- The baby and toddler room is accessed via the paved area around the toilet block
- The door is 800mm wide and over a 20mm threshold and opens outwards
- The rooms dimensions are 3300mm x 1350mm
- There is a key code lock at 1300mm high, but this can be stiff to open
- There is a lowered WC at 330mm high
- There is a half sized bathtub with a shower over the top, with lever taps to operate
- There is a wall mounted, drop down baby changing table at 950mm high



Other Facilities

Dishwashing Room – Toilet Block

- There is a level approach to the dishwashing room via the paved area around the toilet block
- The door is 850mm wide over a level threshold and opens inwards
- There is 1450mm x 2350mm space internally for manoeuvring
- There are 3 sinks in a counter at 900mm high with 850mm knee space below
- Lever taps available



Dishwashing - External

- There is an external dishwashing area to the back of the toilet block
- There is a level approach to the dishwashing area via the paved area around the toilet block

- The space is 2000mm wide with plenty of space behind to manoeuvre
- There are 2 sinks in a 900mm high counter with no knee space below
- There are twist taps to operate



Laundry – Toilet Block

- There is level access to the laundry room via the paved area around the toilet block
- The door is 850mm wide over a level threshold and opens inwards
- There is 2000mm x 3300mm manoeuvring space
- There are 2 front loading washing machines with coin slots at 1050mm
- There is 1 front loading tumble dryer with coin slots at 1050mm
- There are 2 sinks in a worktop at 900mm high with 850mm knee space below
- There are twist turn taps to operate
- If assistance is needed, please ask at reception and the wardens will be happy to help



Information Room – Adjacent to Reception

- Accessed via the brick paved pathway around reception
- The door 800mm wide over a 10mm weather strip at the threshold and opens outwards
- The room's dimensions are 1700mm x 2500mm
- Information is displayed between 750mm and 1500mm high



Play Area

- The play area is to the north east of the site
- The play area is accessed via a grassed area
- There is a 1000mm wide gate with a 50mm step in
- The play equipment is mounted on safety flooring



Service Points

- There are Service Points at intervals around the site, please check the site map for details
- The service points are on concrete setting with level access from the adjacent roadways
- The paths around the Service Points can be as narrow as 750mm wide
- The water taps are at a maximum of 770mm high, with cross head taps
- Chemical Waste Points can be found here too
- The taps at the Chemical Waste Points are 1150mm high



Motorhome Waste Point

- There is one Motorhome Waste Point on site, located close to the toilet block
- The taps are 1150mm high



Information

Written Information

- A range of leaflets for local attractions are available in the Information Room.
- Please ask at reception if you have difficulty reading third party leaflets and staff will be happy to read these to you upon request

Customer Care & Support

Booking Procedures

- If you have any specific requirements for your stay please contact the site directly and they will be happy to discuss your requirements and reserve you the most suitable pitch wherever possible.

Evacuation

- There is an assembly point at the visitor parking area in the event of an emergency
- Please ask at reception for more details

Customer Care and Staff Training

- All on site staff have received disability awareness and etiquette training.

Public Transport

- There are buses a 30 minute walk away, to Llanelli, Swansea and Carmarthen
- Trains run from Burry Port to Llanelli, Swansea, Tenby and Milford Haven

Taxi

- Please contact the site who keep a list of local taxi companies including those offering a wheelchair accessible service where available.