

Accessibility Guide for Buxton Caravan & Motorhome Club Site

Contact for Accessibility Enquiries: Please ask for the Duty Manager

✉ buxton@camc.com

☎ 01298 77735

🌐 <https://www.caravanclub.co.uk/club-sites/england/peak-district/derbyshire/buxton-caravan-club-site/>

At a Glance

Level Access

- The site slopes throughout, the largest slope is from the toilet block down towards the north of the site

Step only Access

- There are no facilities with step only access

Accessible Toilets and Showers

- There is a combined accessible toilet and shower cubicle in the toilet block

Accessible Pitches

- No designated accessible pitches, however pitches are allocated according to your needs or preference, so please contact us in advance to discuss your requirements.



We support the Hidden Disabilities Scheme

- Our organisation supports the Hidden Disabilities Scheme, lanyards and pins are available in reception

Site Address

Buxton Caravan Club Site
Grin Low Road,
Ladmanlow,
Buxton,
Derbyshire,
SK17 6UJ

Arrival and Reception

Approach Route

- Access onto the site is via a tarmac driveway
- The reception building is on the left hand side when you enter the site
- The gate from the road is left open at all times but access into the site is controlled via a vehicle barrier controlled by card access.
- The ground is level in this area with hard surfaced paths linking facilities.

Parking

- A new arrival bay is set within a few metres of the Reception building.
- There is space for 2 visitor cars to park, however there are no disabled bays.
- There is one late night arrival bay with an electric hook up

Entrance into Reception

- There is a 1500mm wide concrete ramp into reception to give level access from the ground with a single handrail
- The Entrance door is 900mm wide over a 10mm threshold
- The entrance door is not power assisted, and opens inwards
- A call bell is available to summon assistance, this is 1400mm above ground level



Reception

- There is approximately 1200mm x 3800mm turning space, clear of the desk and furniture
- The reception desk is set 950mm above the floor and incorporates a dropped, lift up countertop at 750mm high
- The desk is not fitted with a hearing loop



Getting around the Site

- There is a level access route from the site entrance to the toilet block. The site is then gently sloping from the reception and the toilet block towards the east. The access roads to the north and the east of the toilet block are steeper.
- Pedestrians share vehicles routes which are well maintained tarmac, but do incorporate speed bumps

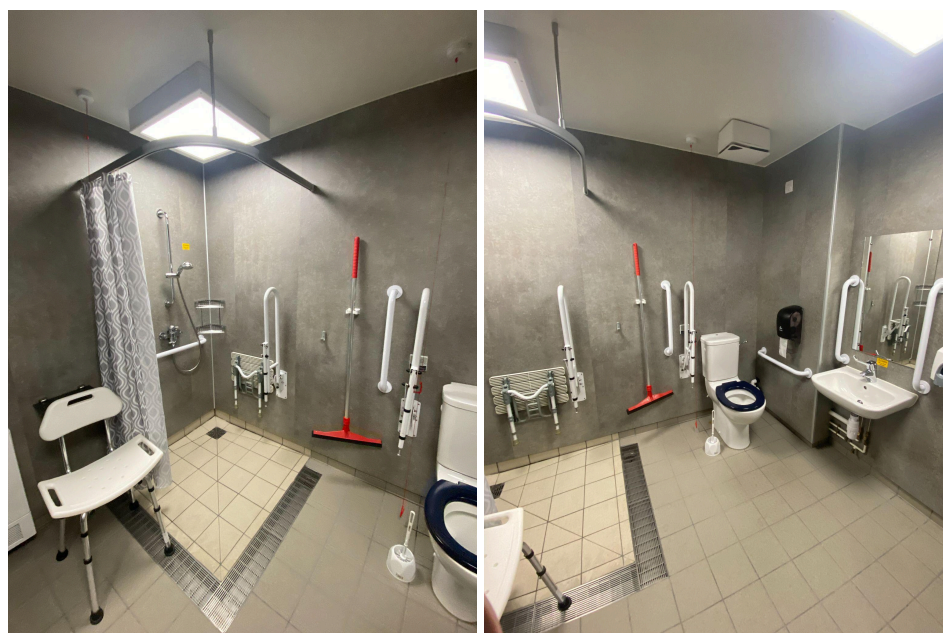
Pitches

- There are 118 pitches on site, all of which are hardstanding
- Temporary multipurpose access rubber matting is not provided
- There are no designated accessible pitches, however pitches are allocated according to your needs or preference, so please contact us in advance to discuss your requirements.
- There are 2 hardstanding pitches within 20 metres of the toilet block, these are on a level section of the site

Toilets and Changing Facilities

Accessible Toilets and Bathing Facilities – Toilet Block

- A combined Accessible Toilet and Shower cubicle is located in the Toilet Block which is set close to the entrance of the site, to the south of the site
- The toilet block is accessed via a shallow paved slope
- The door is 850mm wide, over a level threshold and opens inwards
- The cubicle door is secured by RADAR key. A key can be borrowed from Reception
- The cubicle's overall dimensions are 2600mm x 2500mm
- The WC pan is left hand transfer.
- The shower seat is right hand transfer
- The toilet seat is 480mm, and the shower seat is 500mm above the floor level
- The clear space to the side of the toilet is 950mm wide
- The cubicle is fitted with a pull cord alarm, which is tested frequently
- The shower seat and WC Pan are fitted with grab rails to assist transfer
- Shower controls are 1100mm high
- The shower head is fitted on a sliding rail, which is a minimum of 1350mm above floor level
- The basin taps and shower controls are fitted with levers



Standard Toilets and Washrooms

- There is one toilet and shower block to the south of the site, near the entrance
- Parking for 3 vehicles is available next to Toilet Block
- Entrance doors are accessed by a paved area, which is accessed by dropped kerbs
- The female area has 9 WC cubicles, 9 Shower cubicles and 6 Washbasin Privacy cubicles
- The male area has 6 WC cubicles, 5 Urinals including 1 lower urinal, 9 Shower cubicles and 6 Washbasin Privacy cubicles
- Both the female and male areas have a modified WC cubicle, a modified Shower cubicle and a modified Washbasin Privacy cubicle with grab rails to assist mobility
- Taps in each area incorporate lever controls



Family Room

- There is a family room in the toilet block
- The door opens to 900mm wide, over a level threshold and opens inwards
- The room's dimensions are 2500mm x 3200mm, but it narrows to 1900mm in front of the bath
- There is a WC at 430mm
- There is a half bath with a shower above, this has thumb turn taps to operate

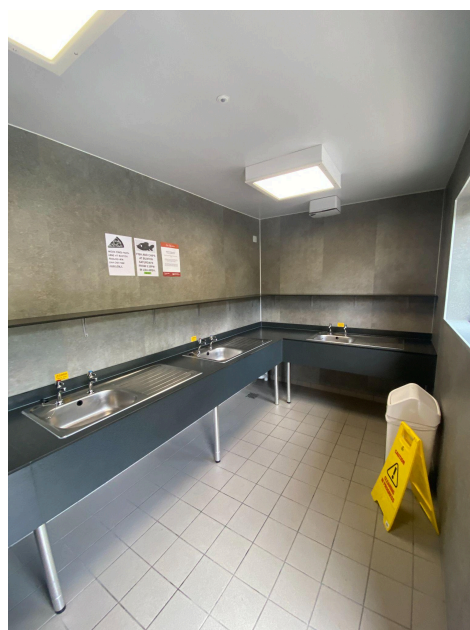
- There is a drop down baby change unit at 7500mm
- There is a shower, with controls at 1000mm high and a moveable shower head
- The basin has lever taps



Other Facilities

Dishwashing – Toilet Block

- The dishwashing room is within the toilet block
- The door is 850mm wide
- There are 4 sinks in an 850mm high counter with 550mm knee space underneath
- There are lever taps



Laundry – Toilet Block

- Level access via paved area
- The door is 900mm wide, over a level threshold and opens inwards
- The room's dimensions are 1600mm x 3200mm
- There are 2 front loading washing machines and 2 front loading tumble dryers, the tumble dryers are stacked on top of each other and the top tumble dryer's door is 1600mm high
- There are 3 sinks in an 850mm high counter with 550mm knee space below
- Lever taps fitted



Information Room – Adjacent to Reception

- Access via the tarmaced area around reception
- The door is 750mm wide, over a level threshold and opens inwards
- There is a small 950mm wide lobby to the information room
- There is 1250mm x 2000mm circulation space within the information room
- Information is displayed on a desk at 950mm high, with more information displayed on the walls



Information Room

Service Points

- There are Service Points at intervals around the site, please check the site map for details
- All of the service points are on concrete settings, with level access from adjacent roadways
- The paths around the Service Points can be as narrow as 650mm wide
- The water taps are at a maximum of 850mm high, with cross head taps
- Chemical Emptying Points can be found here too, with taps at 800mm high



Motorhome Service Point

- There is one Motorhome Service Point on site, located close to the toilet block
- The taps are 1200mm high



Information

Written Information

- A range of leaflets for local attractions are available in the Information Room.
- Please ask at reception if you have difficulty reading third party leaflets and staff will be happy to read these to you upon request

Customer Care & Support

Booking Procedures

- If you have any specific requirements for your stay please contact the site directly and they will be happy to discuss your requirements and reserve you the most suitable pitch wherever possible.

Evacuation

- There is an assembly point opposite reception in the event of an emergency
- Please ask at reception for more details

Customer Care and Staff Training

- All on site staff have received disability awareness and etiquette training.

Public Transport

- There is a bus service 2 miles away, with buses to Leek, Stoke on Trent, Buxton, Manchester and Sheffield and a train service to Manchester

Taxi

- Please contact the site who keep a list of local taxi companies including those offering a wheelchair accessible service where available.